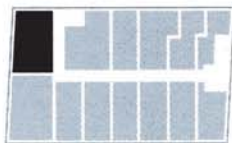
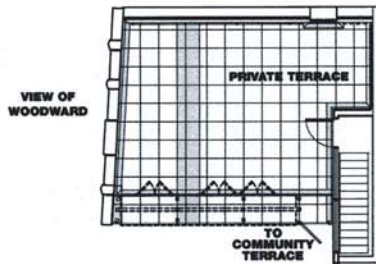




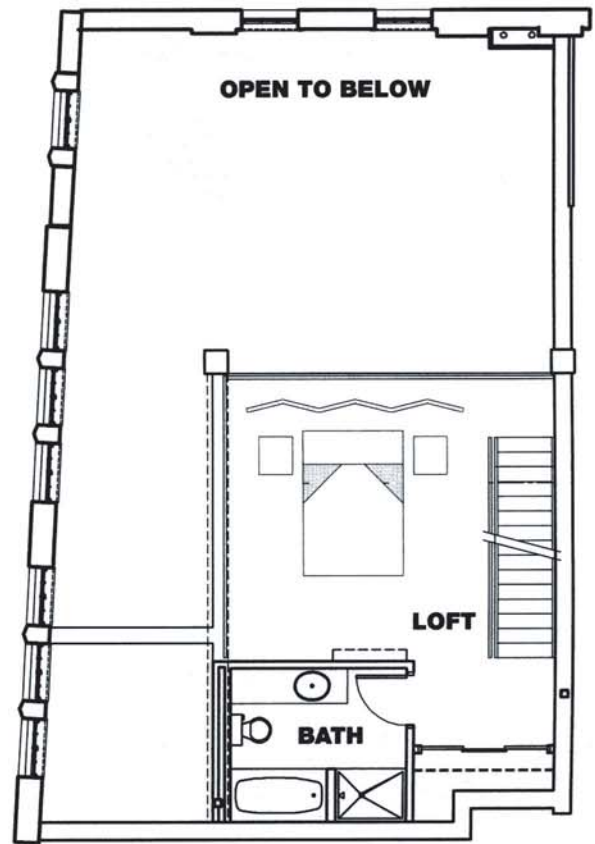
**CRYSTAL LOFTS**  
CENTRAL BRUSH PARK

Unit 201  
1,700 sq ft



313 833 7513  
[www.CrystalLofts.com](http://www.CrystalLofts.com)

Representations and dimensions of the floorplans may not exactly reflect the final construction. There is also no guarantee of availability of any particular product described in this advertisement.



VIEW OF WOODWARD

